



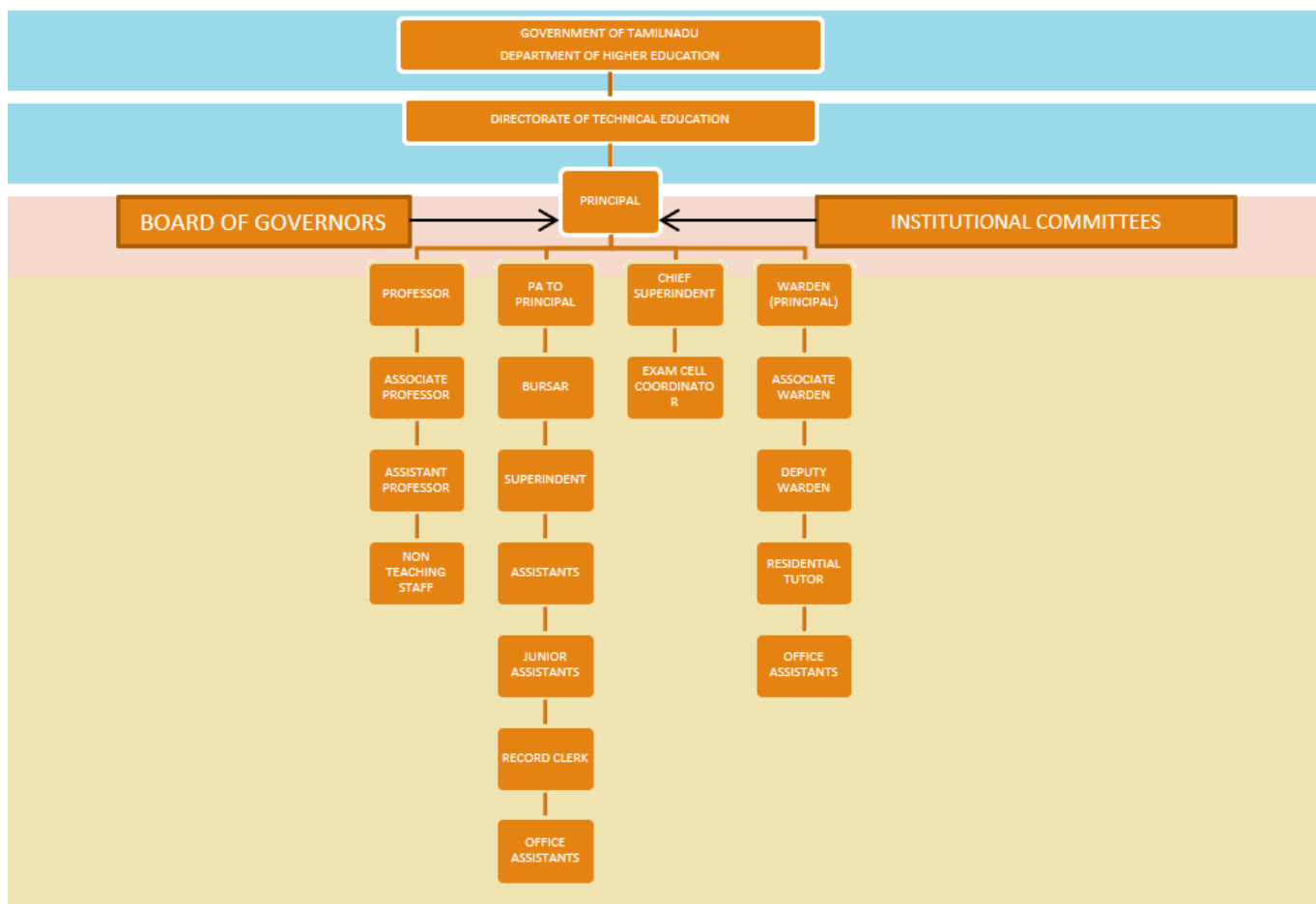
THANTHAI PERIYAR GOVERNMENT INSTITUTE OF TECHNOLOGY, VELLORE-02

Mandatory Disclosure

Details about the Institution	Thanthai Periyar Government Institute of Technology	
	Chitteri Road, Bagayam	
	Vellore District - 632002	
	Tamil Nadu	
	Phone: 0416 - 2267762, 0416 - 2907762	
	Email: principaltpgit@gmail.com	
	Website: www.tpgit.edu.in	
Details about the Trust / Society / Company	Controlled By:	
	Directorate of Technical Education (DOTE)	
	Government of TamilNadu	
	Chennai - 600025	
Details about the Principal	Dr.M.Arularasu,M.E.,Ph.D	
	Principal,	
	Thanthai Periyar Government Institute of Technology, Vellore-02	
	Email ID: principaltpgit@gmail.com	
Details about the affiliating University	ANNA UNIVERSITY	Chennai -600025.
Governance	Dr.U.Solomon, Director, Scientist"G", CVRDO, DRDO, Ministry of Defence ,Avadi, Chennai	Chairman
	Thiru.G.Suresh Gopal, General Manager-Projects Leitwind Shriram Manufacturing Ltd Egmore, Chennai.	Professionalist
	Thiru.T.Ramesh, General Manager, District Industries Centre, Gandhi Nagar Industrial Estate, Vellore-632 006	Industrialist
	Dr.K.S.Easwarakumar, Professor, Dept of Computer Science and Engineering, CEG Campus, Anna University Chennai-600 025.	University Nominee
	Additional Director of Technical Education(Exams), DOTE, Chennai.	Ex-officio Member
	Finacial Advisor & Chief Accounts Officer, DOTE, Chennai- 25	State Government Nominee
	Dr.M.Arularasu, Principal, Thanthai Periyar Government Institute of Technology, Vellore-02.	Member secretary

	Dr.J.Sreerambabu Vice-Principal, TPGIT,Vellore	Member
	Dr. Rahila Bilal, HOD / ECE, TPGIT, Vellore.	Member
		University Nominee
Academic Committee		
	Members of Academic Committee	The institute has an advisory body as indicated in Clickhere
	Frequency of meetings	Twice in a year
	Academic Advisory Body	The Institution has various sub committees of Academic advisory Board comprising nominations from Industry and academia. Clickhere
	Frequency of meetings	Twice in a year.
	Functions of Academic Advisory Board	<ol style="list-style-type: none"> 1. To create Academic regulations 2. To frame Curriculum & syllabi 3. Evaluation &Formation of Examination pattern 4. Create Academic Schedule 5. To evaluate staff performance 6. Monitoring Teaching Learning Quality 7. Introduction / Orientation /Restructuring of courses 8. Academic Auditing (Suggest audit experts from outside the Institution)

Organogram of the Institute



<p>Nature and Extent of involvement of Faculty and students in academic affairs/improvements</p>	<p>The Institute has a development strategy in place, with stated goals and action plans that are in line with the Institute's Vision and Mission. The Steering Committee, in collaboration with IQAC, develops the plans, which are then approved by the DOTE.</p>
<p>Mechanism/ Norms and Procedure for democratic/ good Governance</p>	<p>The Principal is the academic and administrative leader who supervises the institute's entire operation and has authority over academic, administrative, financial, and growth issues. The Vice Principal (VP) oversees day-to-day administration, which is directed by the Heads of Other Departments, Training & Placements, and various Committee activities, which are reviewed by the Committee Chairperson. To achieve excellent governance, TPGIT has decentralized its operations and delegated responsibility at several levels. Academic leadership among teachers within subject areas, peer groups through clusters, and researchers through minor research projects is encouraged through a structured transfer of authority. Academic/administrative/co-curricular/extra-curricular activities are also decided by faculty. Decentralization increases administrative abilities while also providing professional responsibility and accountability, allowing for greater participation in decision-making.</p>
<p>Student feedback mechanism on Institutional Governance/faculty performance</p>	<p>Every semester, students provide comments on each course and faculty member linked with their class/course. The Head of the Department analyses and discusses this input with the affected academics. In addition to that an online feedback mechanism is also shared in website. Online Feedback login - https://tpgit.edu.in/student-feedback/index.php</p>

<p>Grievance redressal mechanism for faculty , staff and students</p>	<p>The Institute has established a Grievance Redressal Committee in line with the requirements. Every student is allocated a mentor with whom they can discuss their issues (if any), meet with the respective Head of Department, and submit a grievance, which is subsequently resolved by the Grievance Redressal Committee.</p> <p>Functions:</p> <ul style="list-style-type: none"> • To create awareness about redressal system • To record the receipt of grievance • To suggest action to be taken on grievances • To help in maintaining a transparent system of administration <p>Click here Clickhere.</p>
<p>Establishment of Anti- Ragging Committee</p>	<p>As per the Statutory requirement the Institute has duly constituted Anti-Ragging Committee Click here. For Anti ragging Squad Click here</p>
<p>Establishment of Online Grievance Redressal Mechanism</p>	<p>The online mechanism is set and to submit a grievance online by stakeholders. (Online complaints) Click here</p>
<p>Establishment of Grievance Redressal Committee in the Institution and Appointment of OMBUDSMAN by the University</p>	<p>The Grievance Redressal Committee is constituted and the OMBUDSMAN is appointed by the University. Clickhere</p>
<p>Establishment of Internal Complaint Committee (ICC)</p>	<p>As per the directive received, the institute has duly constituted the Internal Complaint Committee (ICC) to look into the grievances related to female Students/Staff in the institute. For further details. Click here</p>
<p>Establishment of Committee for SC/ ST</p>	<p>SC/ST cell has been constituted by the institution to resolve all the matters related to the SC/ST students and staff .For further details Clickhere</p>
<p>Internal Quality Assurance Cell</p>	<p>The Institute developed the Internal Quality Assurance Cell (IQAC) to ensure ongoing quality improvement and academic excellence. IQAC has implemented a number of quality reforms to improve teaching-learning processes, brand building, and the use of an ICT-enabled environment to ensure that academic operations run smoothly.</p> <p>For further details. Click here</p>
<p>Programme offered</p>	<p>Civil Engineering(UG)</p> <p>Computer Science and Engineering(UG)</p> <p>Electronics& Communication Engineering(UG)</p> <p>Electrical &Electronics Engineering(UG)</p> <p>Mechanical Engineering(UG)</p> <p>Structural Engineering(PG)</p> <p>Manufacturing Engineering(PG)</p> <p>Applied Electronics(PG)</p>

	Master of Computer Applications(PG)					
Name of Programmes Accredited by AICTE	Civil Engineering(UG)					
	Electronics & Communication Engineering(UG)					
	Mechanical Engineering(UG)					
Status of accreditation of the courses	<p>The NBA has accredited three of the UG Programmes namely: Civil Engineering(UG) Electronics & Communication Engineering(UG) Mechanical Engineering(UG) Total number of Courses : 9</p> <p>No. of Courses for which applied for Accreditation : 3</p> <p>Status of Accreditation:Accredited</p>					
Details about the courses	UG Intake & Dur	PG Intake & Dur	Cut off last 3Yrs(Min)			Fee Details
			21-22	20-21	19-20	
Civil Engineering(UG)	60 (8 Sem)	-	Click here			<ul style="list-style-type: none"> • UG – First Year • UG- Lateral entry • UG- Part time • PG- First Year • MCA – First and Lateral entry
Computer Science and Engineering(UG)	60 (8 Sem)	-				
Electronics & Communication Engineering(UG)	120 (8 Sem)	-				
Electrical & Electronics Engineering(UG)	60 (8 Sem)	-				
Mechanical Engineering(UG)	120 (8 Sem)	-				
Structural Engineering(PG)	-	18 (4 Sem)				
Manufacturing Engineering(PG)	-	18 (4 Sem)				
Applied Electronics(PG)	-	18 (4 Sem)				
Master of Computer Applications(PG)	-	40 (4 Sem)				
Placement Facilities	Institute has a full-fledged Training and placement cell. Placement Coordinators Click here					
Campus placement in last three years with maximum salary.	The Placement cell consists of faculty members, who work towards providing soft skill and technical training, internships and final placements. Institute has a dedicated team which works throughout the year to provide better placement to all the students in their area of interest. Click here					
Twinning and Collaboration with Foreign University(s)	Nil					
Faculty	Faculty Details updated in college website.					
Profile of Principal	Principal Details Click here					
Fee approved by State Fee Committee For academic year 2021-22	UG	PG	MCA			
	For First Year Click here	Click here	MCA First Year Click here			

	For Lateral Entry Click here					
	Part time Fees Click here					
Time schedule for payment of fee for the entire programme	July to September					
No. of Fee waivers granted with amount and name of students	UG Engg	PG Engg			MCA	
	Click here					
Number of scholarship offered by the Institution, duration and amount	Scholarship Name	Duration			Amount	
	Community Scholarship	Every year			Based on Community criteria.	
	National Scholarship	Every year			Rs.50,000/- (For Pragati Scholarship for women)	
Criteria for fee waivers/scholarship	Concession for First Graduate and for SC/ SCA, ST students.					
Admission - Sanctioned Intake - UG	Year	CE	CSE	ECE	EEE	MECH
		60	60	120	60	120
Current Intake	2021	60	60	120	60	120
	2020	60	60	120	60	120
	2019	60	60	120	60	120
Admission - Sanctioned Intake - PG	Year	SE	MAN	AP	MCA	-
		18	18	18	18	-
	2021	18	18	18	18	-
	2020	18	18	18	18	-
	2019	18	18	18	18	-
Current Intake	2021	18	18	18	18	-
	2020	18	18	18	18	-
	2019	18	18	18	18	-
Category wise student admissions	Year	Community				
		BC	MBC	SC	ST	Other
	21-22	Click here				
	20-21	B.E 2018				
	19-20	B.E 2019				
	B.E 2019 L.E					
	B.E 2020					
	B.E 2021					
	B.E L.E 2020					

		B.E L.E 2021 M.E-First Year MCA – First Year and Lateral Entry ME MCA 2019 ME MCA 2020
Institute Quota admissions	21-22	Admission procedure carried out through Single Window System following State Government reservation norms.
	20-21	
	19-20	
Admission Procedure		
Details of Admission test	UG	Through Single Window System following State Government reservation norms.
	PG	Through TANCET and GATE.
	MCA	Admissions are done based on TANCET.
Seats allotted	UG	As per State Government Norms
	PG	
	MCA	
Admission Calendar	Admission calendar and procedure is issued by Anna University.	
	Counseling notification for Admission given. Online Applications are invited for Students' Registration. Based on cut off marks counseling for students called for.	
Admission fee refund policy	Caution deposit of the Fees paid will be refunded after getting T.C.	
Criteria and Weightages for Admission	Describe each criterion with its respective weightages i.e. Admission Test, marks in qualifying examination etc.	100% weight age on exam marks
	Mention the minimum level of acceptance, if any	As per cut off.
	Mention the cut-off levels of percentage and percentile score of the candidates in the admission test for the last three years	Direct admission through DOTE For percentage cut off levels, Click here -
	Display marks scored in Test etc. and in aggregate for all candidates who were admitted	

Results of Admission Under Management seats/Vacant seats	Composition of selection team for admission under Management Quota with the brief profile of members (This information be made available in the public domain after the admission process is over)	No Management seats available.
	Score of the individual candidate admitted arranged in order or merit	
	List of candidate who have been offered admission	
	List of the candidate who joined within the date, vacancy position in each category before operation of waiting list	
Information of Infrastructure and Other Resources Available	Number of Class Rooms and size of each	Adequate Click here
	Number of Tutorial rooms and size of each	Adequate Click here
	Number of laboratories and size of each	Adequate Click here
	Number of Drawing Halls with capacity of each	Adequate Click here
	Number of Computer Centers with capacity of each	Adequate Click here
	Central Examination Facility, Number of rooms and capacity of each	Adequate
	Barrier Free Built Environment for disabled and elderly persons	Yes
	Occupancy Certificate	Yes
	Fire and Safety Certificate	Yes
	Hostel Facilities	Yes Click here
Library	Number of Library books/Titles/Journals available (program-wise) List of online National/ International Journals subscribed	Library: Click here
	E- Library facilities	Yes

Laboratory and Workshop	List of Major Equipment/Facilities in each Laboratory/ Workshop List of Experimental Setup in each Laboratory/ Workshop	Click here
Computing Facilities		
Internet Bandwidth	150 mbps	
Number and configuration of System	Adequate	
Total number of system connected by LAN	All	
Total number of system connected by WAN	All	
Major software packages available	As per syllabus	
Special purpose facilities available	<ul style="list-style-type: none"> • AI lab developed in ECE department • Robotics Lab available in Mechanical Engineering • Research Lab available for Civil Engineering Department • Siemens Institute Interaction cell available. 	
Innovation Cell	TPGIT has an Innovation Lounge which is a designated area wherein creative student projects are displayed to motivate other students. Photographs of renowned innovators are also displayed to create an encouraging ambience.	
Social Media Cell	TPGIT has Corporate Communication cell driven by the faculty members who look after and handles communication over various social media platforms. The social media links: Facebook, Telegram	
Facilities available		
Games and Sports Facilities	To inculcate the love of sports and to cater to the needs of sports enthusiasts on the campus, the Institute has well-maintained sports facilities.	
Extra-Curricular Activities	<ul style="list-style-type: none"> • Tamil Mandram available • YRC available. • Sports facilities available. • NSS 	
Soft Skill Development Facilities	Language Laboratory available.	
Teaching Learning Process		
Academic Calendar of the University	1. UG – Click here 2. PG – Click here	

Teaching Load of each Faculty	As per AICTE norms.			
Internal Continuous Evaluation System in place	Internal Assessment – Twice in a semester Practical / Tutorial evaluation – Weekly Assignments - Monthly			
Student's assessment of Faculty, System in place	In every semester students' feedback is taken twice for every course and faculty associated with their class / course. This feedback is analyzed and discussed with concerned faculty in the presence of Head of the Department and Principal.			
Information related to PG course	Title of the Course	M.E. Structural Engineering M.E. Applied Electronics M.E. Manufacturing Engineering Master of Computer Applications		
	Curriculum and Syllabi	Click here		
	Laboratory facilities exclusive to the Post Graduate Course	Available for MCA, Structural Engineering, Manufacturing Engineering, Applied Electronics		
	Software, all design tools in case	Available		
	Academic Calendar and framework	Click here		
Enrollment to PG courses	A P	MAN	SE	MCA
21-22	18	18	18	40
20-21	18	18	-	40
19-20	18	18	-	40
18-19	18	18	-	40
List of Research Projects/Consultancy Works	1. Received Grant from TNSTC. Click here			
Publications by PG students	ECE	MAN	SE	
18-19	1	-	-	
17-18	1	1	-	
16-17	1	1	-	

Industry Linkage - MOUs	Click here Click here Click here Click here	
LoA and subsequent EoA till the current Academic Year	EOA for 20-21 received EOA 14-15 EOA 15-16 EOA 16-17 EOA report 18-19 EOA 19-20 EOA 20-21 EOA 21-22 EOA BW EOA	
Accounted audited statement for the last three years	Click here	
Best Practices adopted	<ul style="list-style-type: none"> • Staff prepared Video Lectures for concerned subjects during pandemic situation for the benefit of students. • Online Lectures are given by Subject Experts. 	